

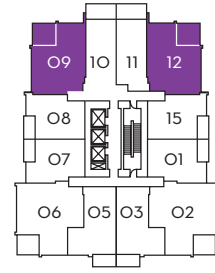


09 & 12  
户型 A  
2 卧房

套内面积\*  
60.9  
平方米  
655 SF

阳台\*  
11.1  
平方米  
120 SF

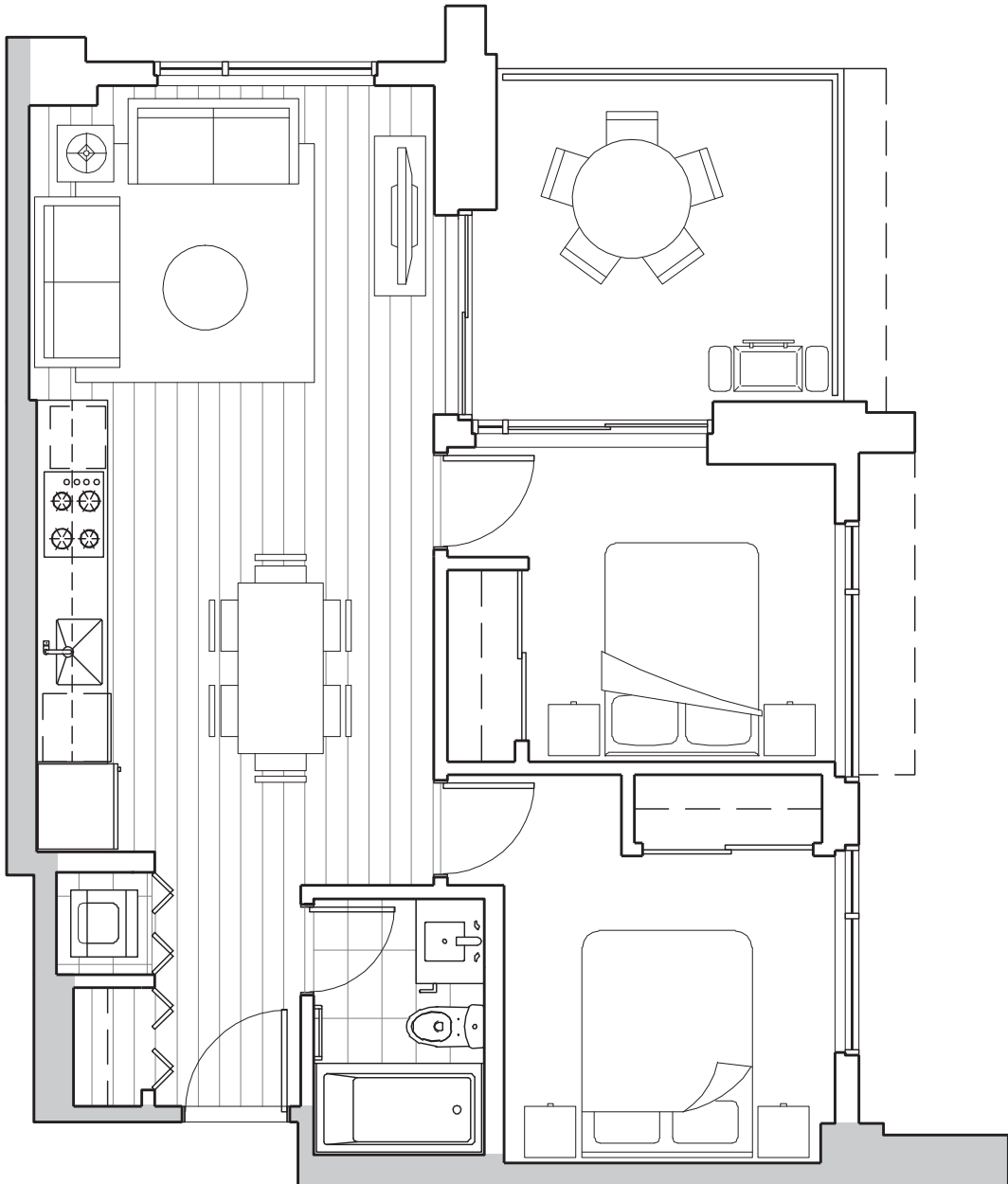
总面积\*  
72.0  
平方米  
775 SF



实际户型可能有轻微变动或将为显示图的镜像。

标准户型 3 - 40 楼层

\*312: 套内面积64.3平方米, 阳台12.7平方米, 总面积77.0平方米。



发展商保留修改以上内容及最终解释权。有关上述资料详情, 请参阅发展商所提供的项目说明书 (Disclosure Statement)。以上中文译本只供参考, 一切内容以英文版本为准。

The developer reserves the right to make modifications and changes to features and finishes, brands, materials, building design, specifications, features, ceiling heights, flooring patterns and floor plans without notification. Suite sizes are computed 0.015m offset from the outside face of exterior walls, 0.015m offset from the outside face of walls adjacent to common areas and to the centreline of walls common to other suites. Measurements for exterior balconies and terraces are computed from the outside face of exterior walls to the slab edges of the outside face of parapets. All illustrations reflect the artist's interpretation of the project and do not take into account the neighbourhood buildings, physical structures, streets and landscape. These materials will be governed entirely by the terms of the applicable disclosure statement and purchaser contract in each case. This is not an offering for sale. Any such offering can only be made with the applicable disclosure statement. Concord Park Avenue Limited Partnership. E&OE