



01至08
联排别墅

3 卧房

套内面积
124.8
平方米

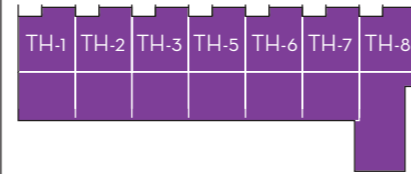
1343 SF

阳台
67.17
平方米

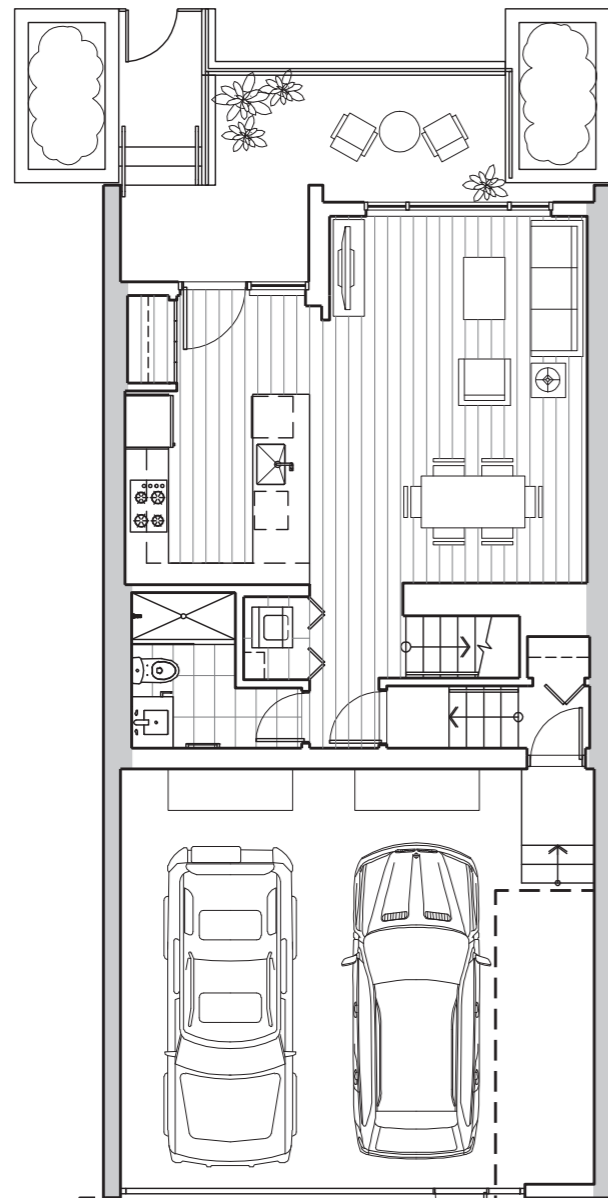
723 SF

总面积
191.9
平方米

2066 SF

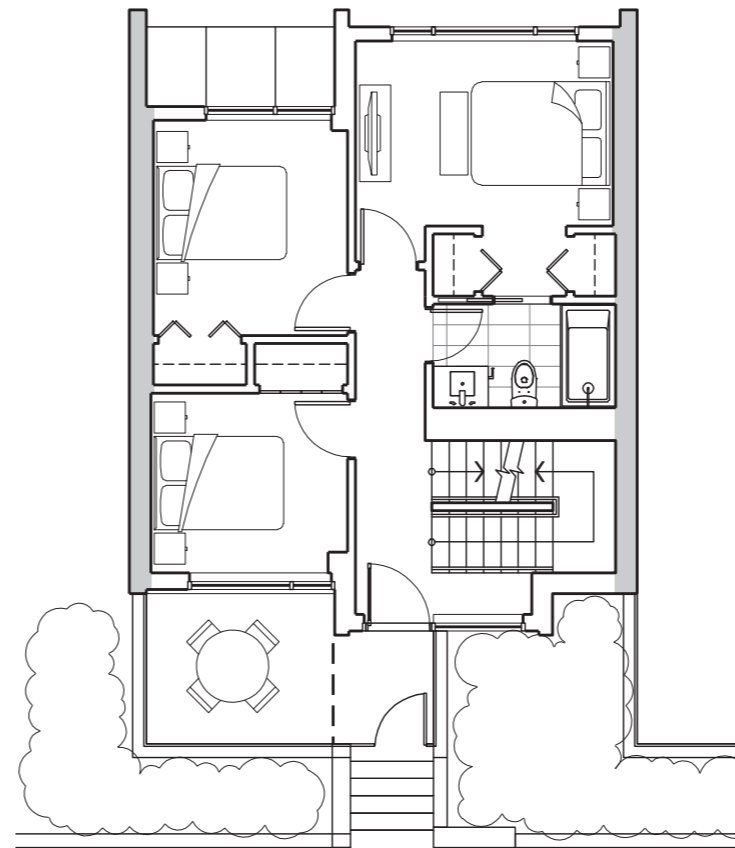


01与08号联排别墅户型将有所不同, 详情请向销售顾问查询。

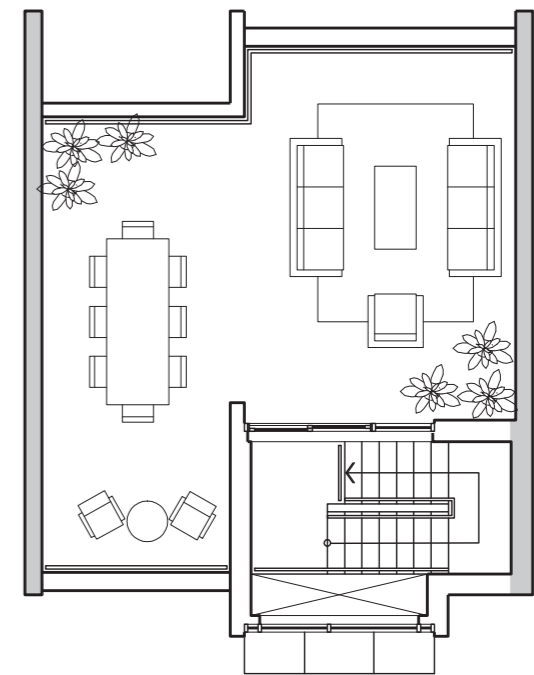


虚线只代表08号联排别墅的车库。

1 楼



2 楼



3 楼 (平台花园)

发展商保留修改以上内容及最终解释权。有关上述资料详情, 请参阅发展商所提供的项目声明书 (Disclosure Statement)。以上中文译本只供参考, 一切内容以英文版本为准。

The developer reserves the right to make modifications and changes to features and finishes, brands, materials, building design, specifications, features, ceiling heights, flooring patterns and floor plans without notification. Suite sizes are computed 0.015m offset from the outside face of exterior walls, 0.015m offset from the outside face of walls adjacent to common areas and to the centreline of walls common to other suites. Measurements for exterior balconies and terraces are computed from the outside face of exterior walls to the slab edges of the outside face of parapets. All illustrations reflect the artist's interpretation of the project and do not take into account the neighbourhood buildings, physical structures, streets and landscape. These materials will be governed entirely by the terms of the applicable disclosure statement and purchaser contract in each case. This is not an offering for sale. Any such offering can only be made with the applicable disclosure statement. Concord Park Avenue Limited Partnership. E&OE